

Abuse of older people research symposium: Panel 1 – Understanding and measuring abuse of older people

- Gail Pacheco, Auckland University of Technology
- Tia Dawes, Wai Rangahau
- Pauline Gulliver, National Mortality Review



New Zealand
Family Violence
Clearinghouse

3 September 2024





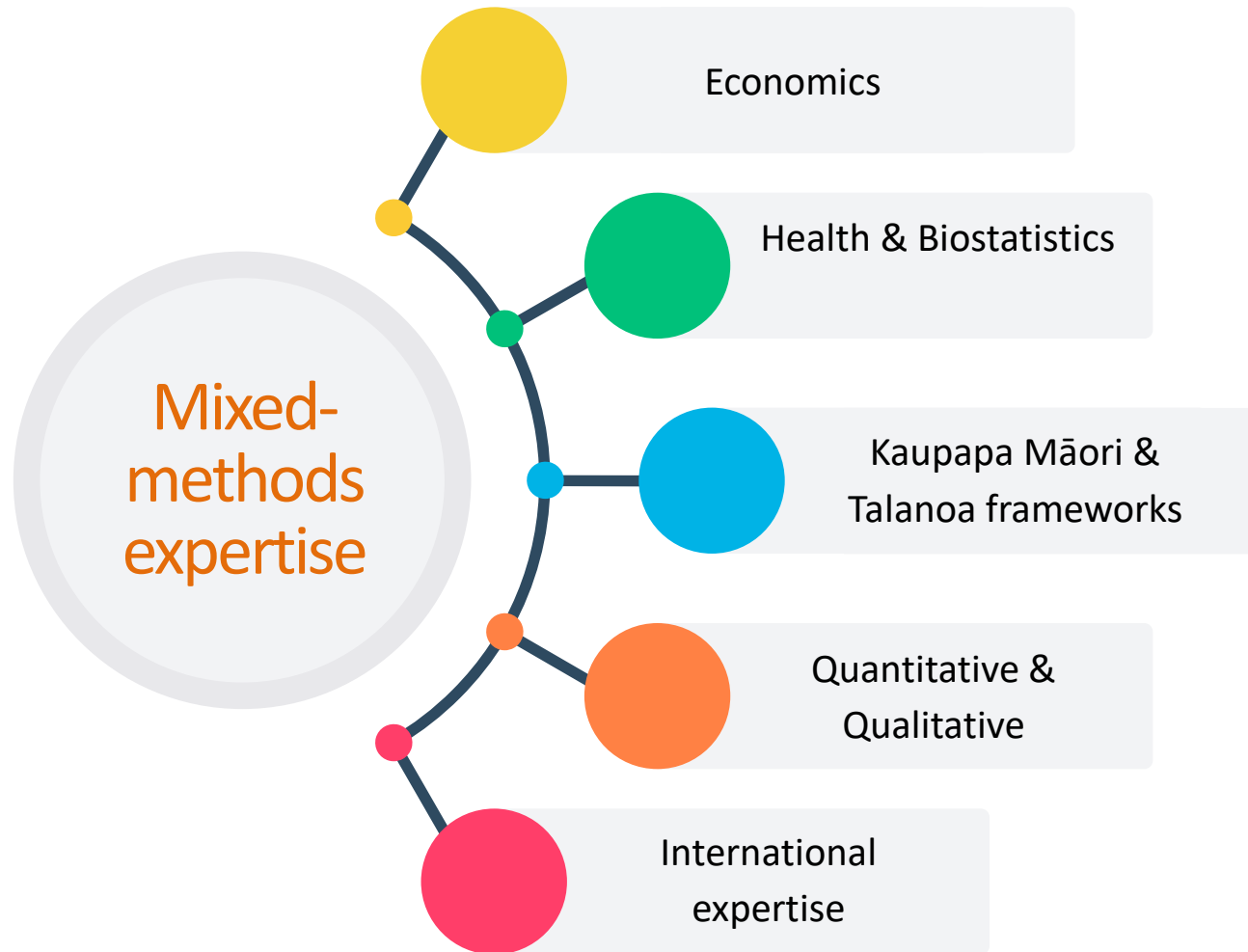
Prevalence study of abuse of older people

Professor Gail Pacheco



**NEW ZEALAND POLICY
RESEARCH INSTITUTE**
TE KĀHUI RANGAHAU MANA TAURITE

Complex issue



NEW ZEALAND POLICY
RESEARCH INSTITUTE
TE KĀHUI RANGAHAU MANA TAURITE



Our approach

“a single or repeated act or failure to act, including threats, that results in harm or distress to an older person. These occur where there is an expectation of trust and/or where there is a power imbalance between the party responsible and the older person”

Our approach

1 Using the IDI

2 National prevalence survey

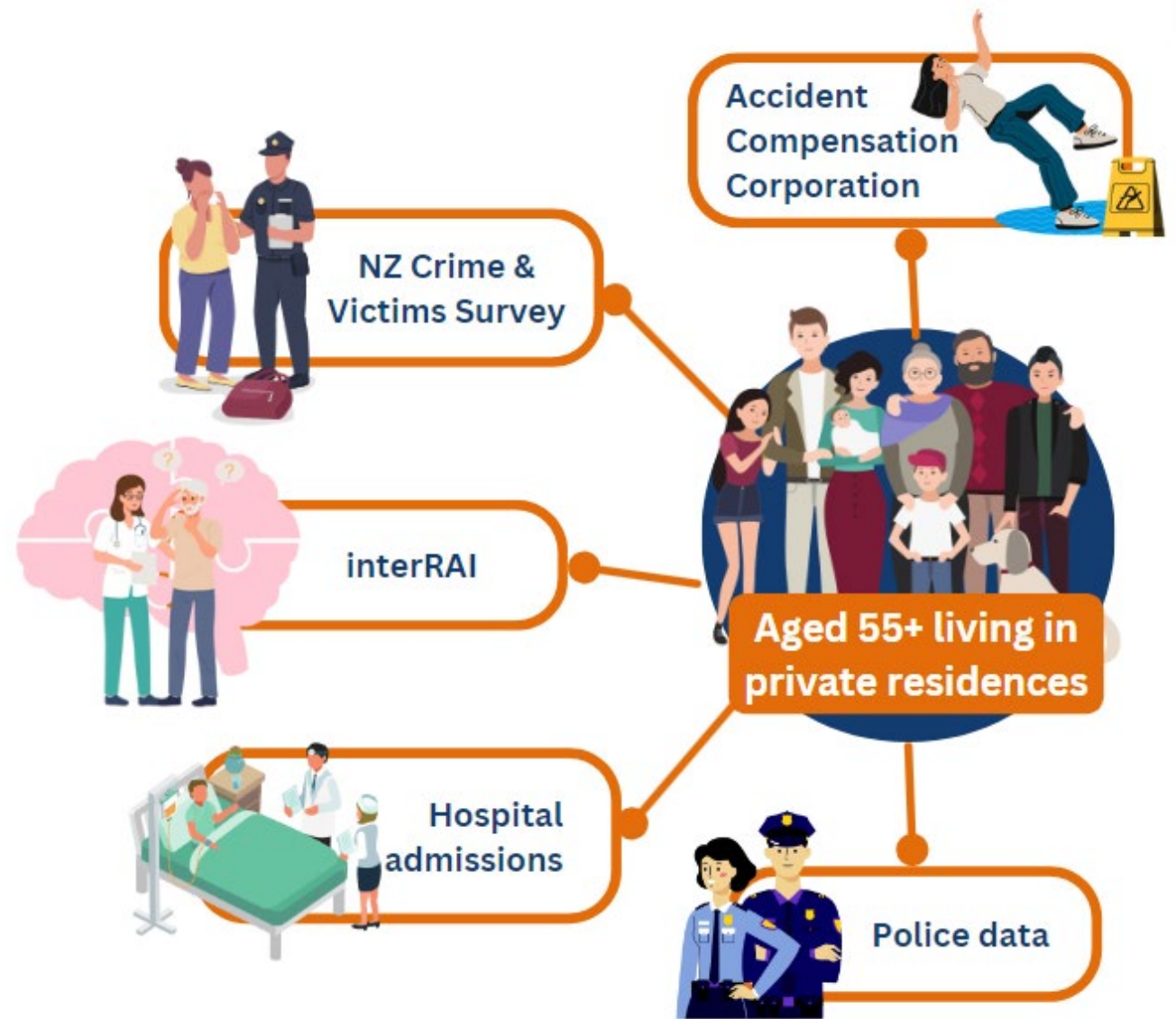
3 Qualitative deep dives

Our approach

1 Using the IDI

2 National prevalence survey

3 Qualitative deep dives

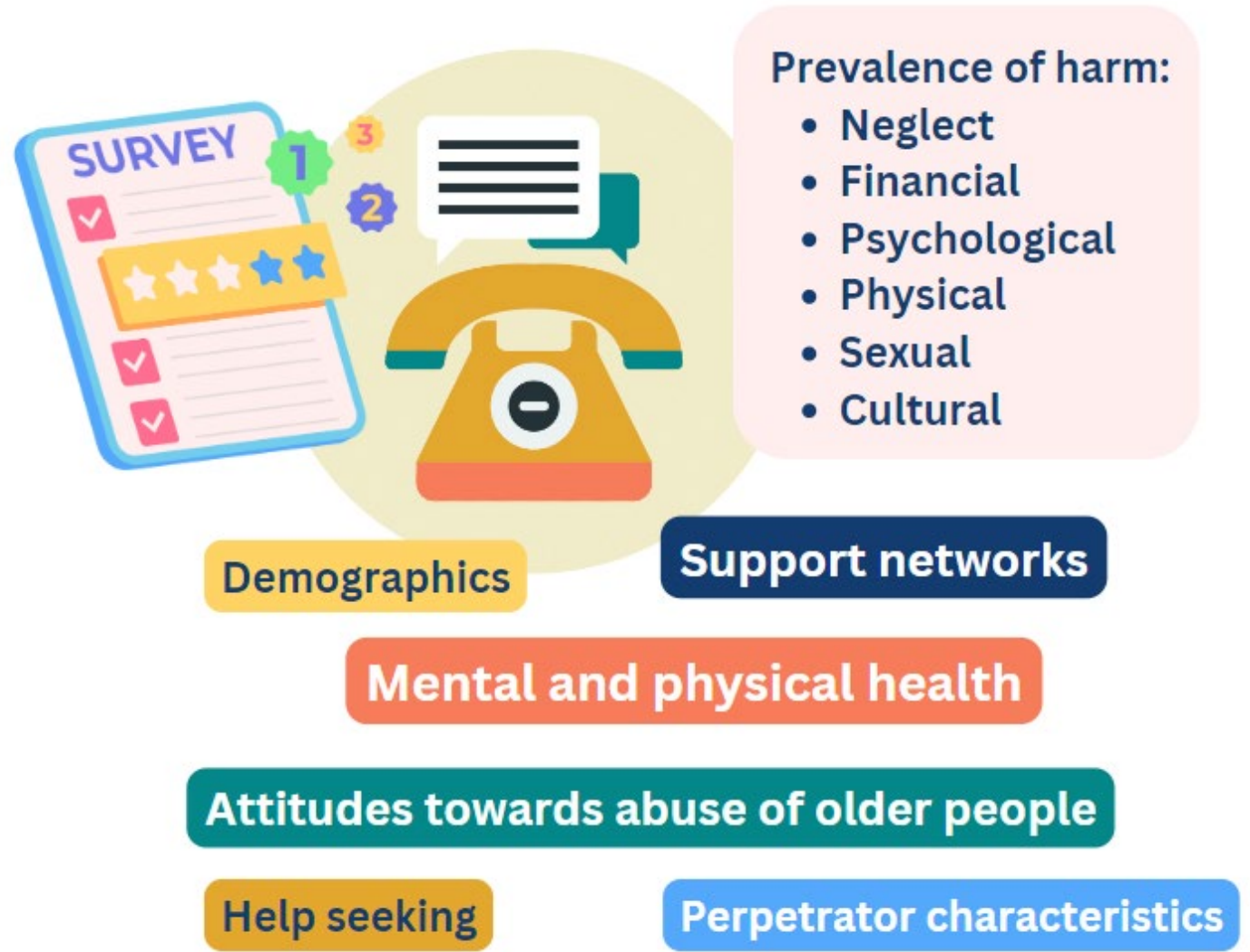


Our approach

1 Using the IDI

2 National prevalence survey

3 Qualitative deep dives



Our approach

1 Using the IDI

2 National prevalence survey

3 Qualitative deep dives



Our perspective

How does this shape our understanding of wellbeing for older people?

NZ Policy Research Institute

gail.pacheco@aut.ac.nz

<https://nzpri.aut.ac.nz/research/health-and-wellbeing-of-older-new-zealanders>

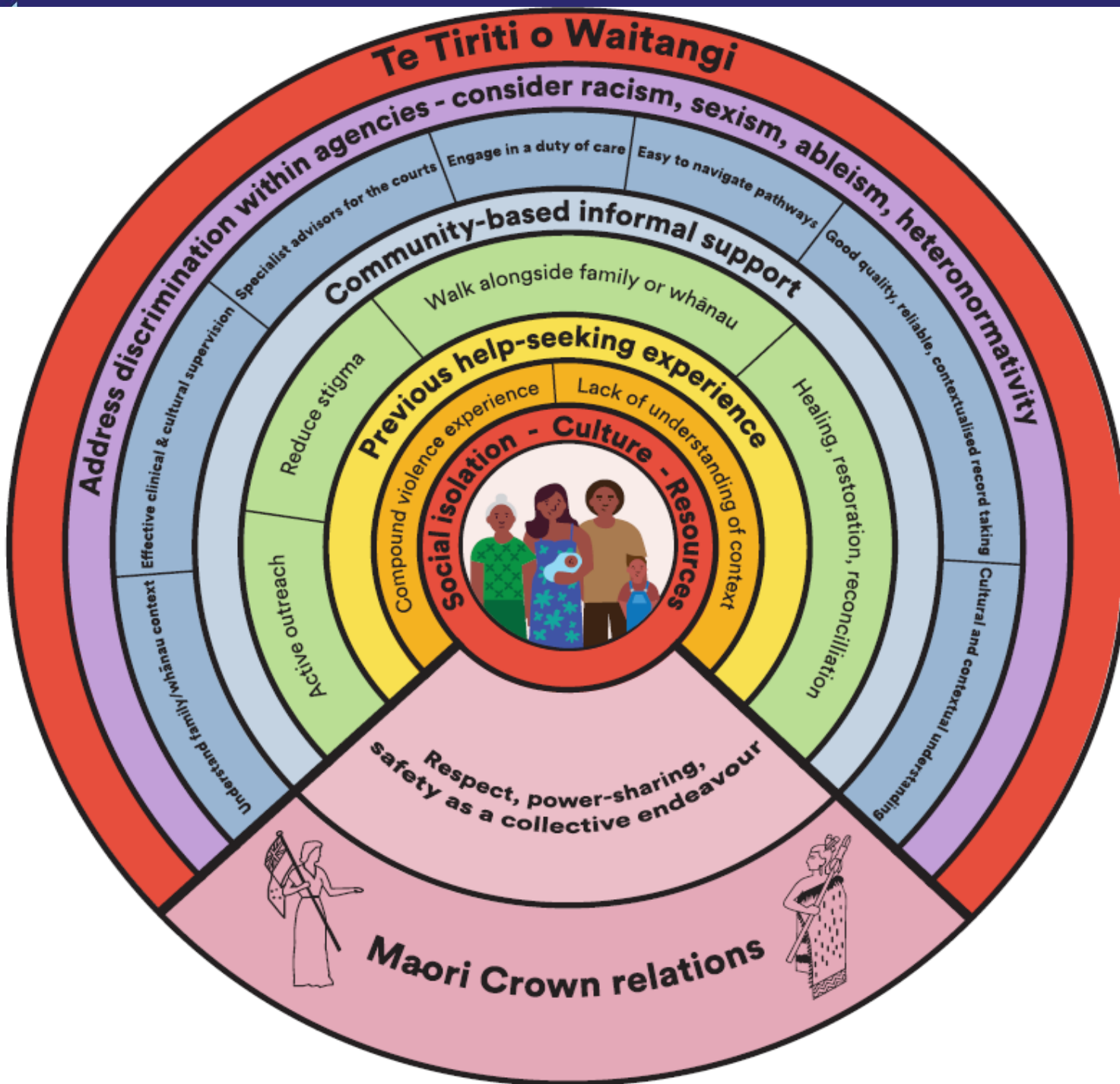


Te Tāhū Hauora
Health Quality & Safety
Commission

A perspective from mortality review

Pauline Gulliver

2 September 2024



Aging well

Life transitions

Identity


Chronic health conditions

Safety from a whole person
– family – whānau
perspective





Understanding from a research and policy perspective

- Definitions are good for research, not so much for ensuring comprehensive care:
 - Narrowly define the 'condition';
 - Encourage a siloed response;
 - Focus on the individual.
 - Definitions are required for policy development. BUT...
- 



Workshop 1 questions

- How do the definitions of abuse of older people impact or limit the work that you do?
- How can we ensure research, policy and practice captures the actual experiences of older people?

